



Flash LOCK User Manual

**Password Protection Software
V2.34-T08**

Table of Contents

A.	Introduction.....	2
B.	General Description	2
C.	Features.....	2
D.	Before Using the Security Application Program – Flash Lock.....	3
E.	Introduction to the Security Application Program – Flash Lock.....	4
	E1. How to Access Flash Lock Software	4
	E2. Set Password / Change Password	6
	E3. Disable Password.....	9
	E4. Unlock Device	11
F.	Checking the Security Application Program – Flash Lock’s Version.....	19
G.	Running the Program As Privilege User ?!.....	19
H.	FAQ – Frequently Asked Questions	20
I.	Regulatory.....	21

A. Introduction

- This Flash Lock security application program only applies to a *secure series of products*. Usage of this AP on other products is prohibited.
- Plug in only *ONE* device at a time. *DO NOT* plug in two or more secure device at the same time when running this security application program – Flash Lock.
- Windows 2000 users, please upgrade to *Service Pack 3 (SP3)* or *Service Pack 4 (SP4)* first before using this security product and application program.
- This security application program, Flash LOCK, is designed for Windows based operating systems only, Windows 8, Windows 7, Windows Vista, Windows XP and Windows 2000.

B. General Description

The product you have is a USB Flash Memory Storage Device with a password protection function. This security function provides you with high privacy to your personal data. It lets you set up your unique password with a maximum of 16 characters and adjustable public and secure areas.

Securing your data with the Flash Lock has never been easier. Flash Lock provides convenience and privacy, as well as high security for data stored on your USB flash memory storage device. Feel safe with the Flash Lock security function.

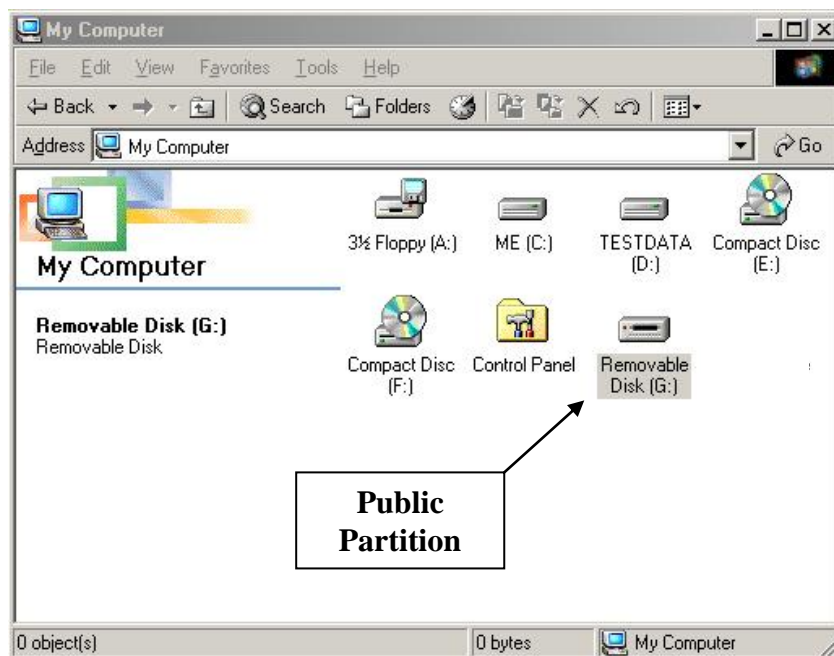
C. Features

- (a) **Disk Free** - program is stored on the device, so an extra CD-ROM disc is not required.
- (b) **Easy to Operate** – program is pictorial with easy to understand icons and friendly descriptions.
- (c) **Customized Password** – users can assign a password of their choice from 1 character to a maximum of 16 characters.

- (d) **Fixed Password Retry** – users are only allowed to type in the password 6 times, when typing in the wrong password beyond the sixth time; the drive will be formatted to protect the data from being exposed to others.
- (e) **Friendly Reminder** – A password hint function is available, in case the user forgets their password. The User can set up a password hint with a message of up to 32 characters.
- (f) **Multi Language Support** – supports English, Deutsch, Italian, French, Spanish, Polish, Japanese, Czech, Dutch, Hungarian, Portuguese, Slovak, Traditional Chinese and Simplified Chinese. Flash Lock will auto detect the language used by the operating system. Default interface set to English

D. Before Using the Security Application Program – Flash Lock

When you plug your device into a USB port, your operating system should recognize the device and show a “Removable Disk” icon. This is the “Public” partition (Partition 2 as described below.) The security application program, Flash Lock, will be stored in this partition.



The Public and Secure partitions can be configured to the desired percentage of the total capacity. The default is maximum Public partition. This configuration is shown below.

Partition 1 – Secure Area

This secure area is protected by a password and can only be accessed by typing in the correct password. If **NO** password exists, then you cannot use this partition.

Partition 2 – Public Area

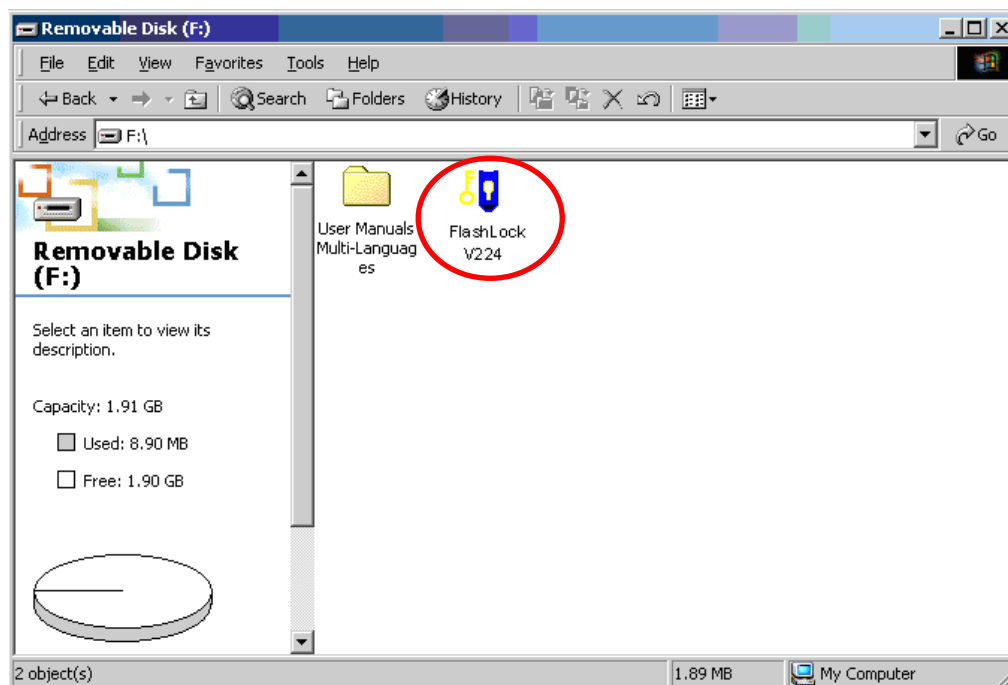
This area is “Always Open” to all users of the device. Users can read / write data to this area at any time. The security application program, Flash Lock, will be stored in this partition. Password security will only apply to the secure partition and will not affect this partition.

Note: The Secure partition only displays following successful Login with the password, and the Public partition does not display again until Log out or disconnect of the drive.

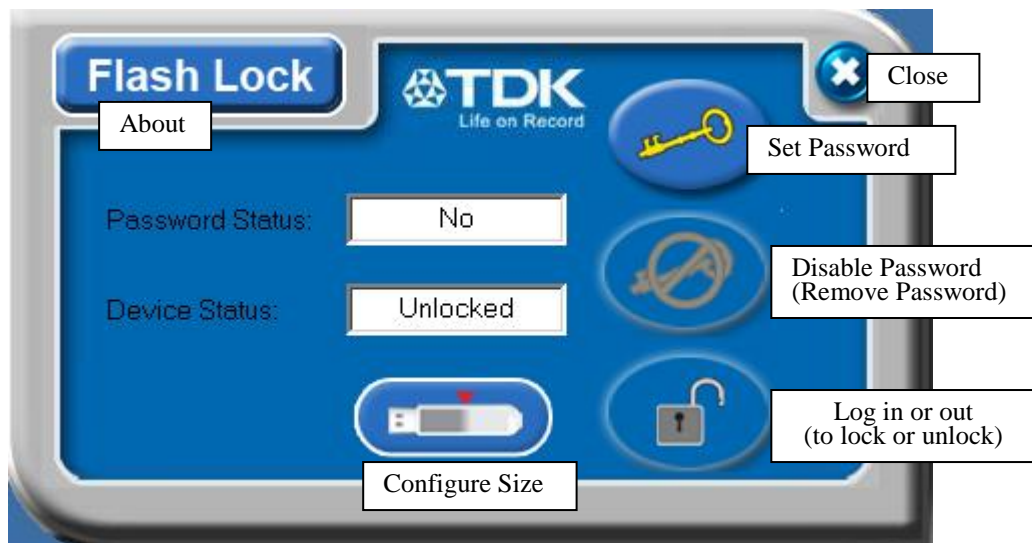
E. Introduction to the Security Application Program – Flash Lock

E1. How to Access Flash Lock Software

Please access “Removable Disk”, there you can find “FlashLock” software. Please click and enter “Flash Lock” application software.



Main Screen

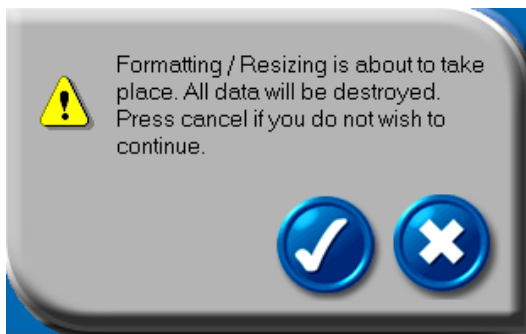


Active buttons are defined as you move the cursor over the buttons. Change password & Flash Lock/unlock are not active until partition & password are created.

For the first time use it is suggested to create a partition (password can be created, but it will have to be disabled again to create partition).



Click on the center partition button.



Move the pointer to the left or right to change the size of the public and secure area. (minimum capacity that can be set for public area is 2MB, higher for larger drives)



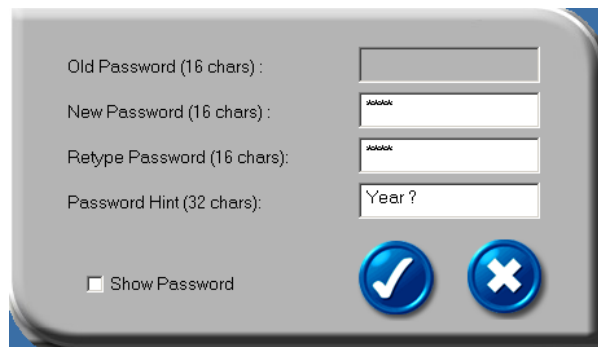
After Partition is created, the secure partition is available prior to unplugging and creating password.

E2. Set Password / Change Password



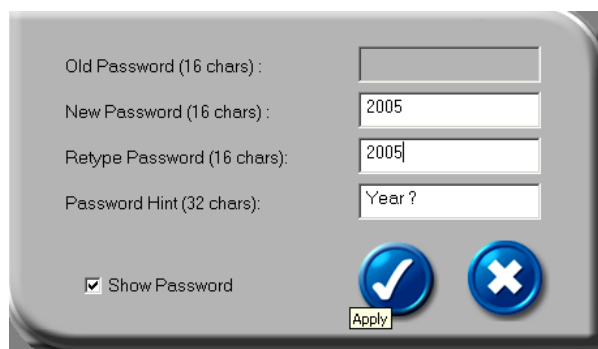
Press the top right hand button to setup or change your password.

Set up password: If no password exists, simply enter a password of your choice up to 16 characters in length. You may also enter a password hint (maximum 32 characters including spaces) to remind you of your password in the event that you forget it.

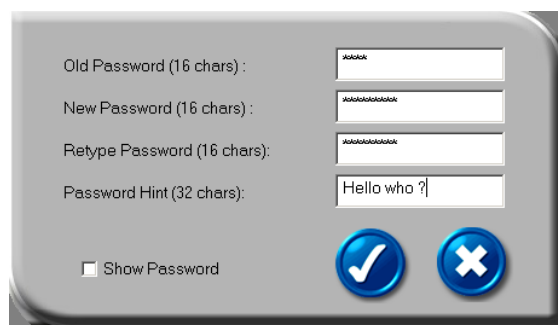


Note: *You can only type in English letters and numbers.*

Click the “Show Password” box to view what you are typing.




Change Password: Please enter the current password and new password of your choice within 16 characters; you may also enter a password hint (maximum 32 characters including spaces) of your choice to remind you of your password, in case you forgot your password.

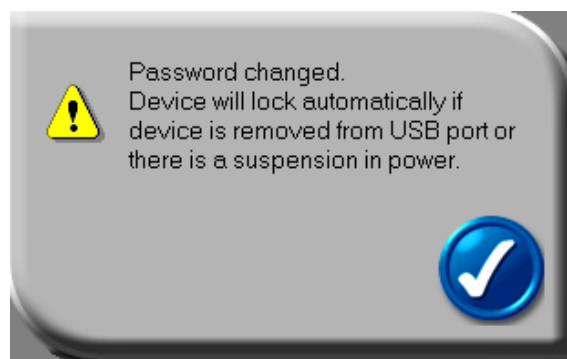



Click the “Show Password” box, if you want to see what you are typing.



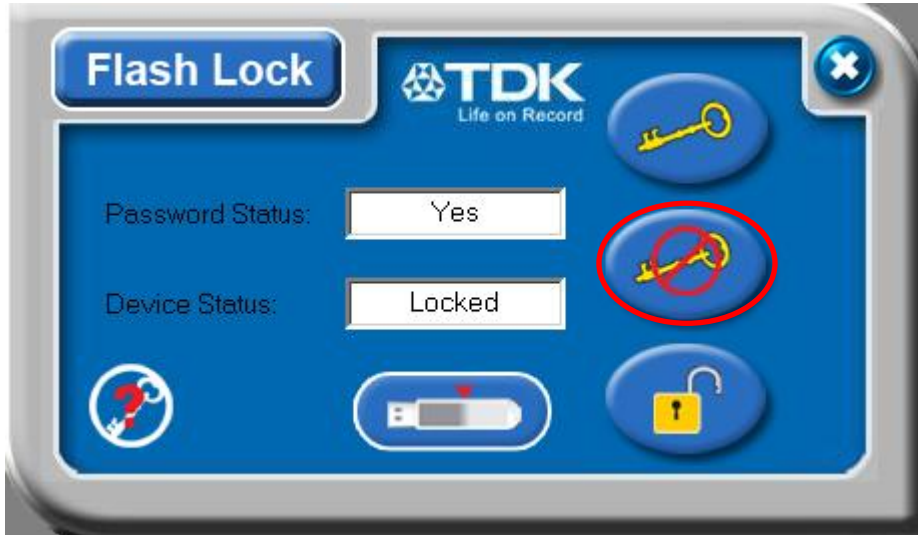
A screenshot of a password change dialog box. It contains four input fields: 'Old Password (16 chars):' with '2005', 'New Password (16 chars):' with 'hello1234', 'Retype Password (16 chars):' with 'hello1234', and 'Password Hint (32 chars):' with 'Hello who?'. At the bottom left, there is a checkbox labeled 'Show Password' which is checked and highlighted with a red rectangle. To the right of the checkbox are two blue circular buttons: one with a white checkmark and one with a white 'X'.


When ready, Press  (apply) to save the password and password hint. You will see the following messages telling you that the password had been changed and the device will be locked automatically when you remove it from the USB port or if there is a suspension in power.

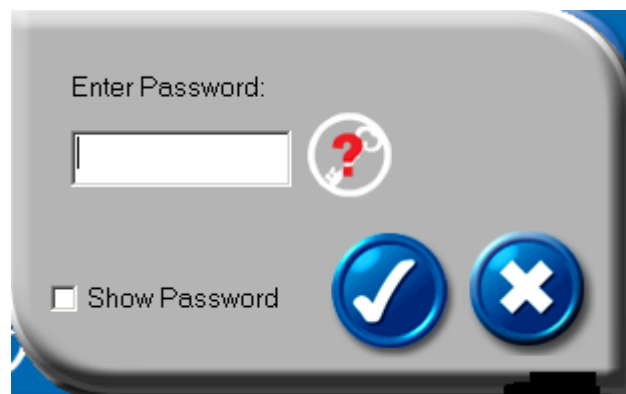


Press  (cancel) to cancel the change password procedure, if you want to keep the current password and password hint.

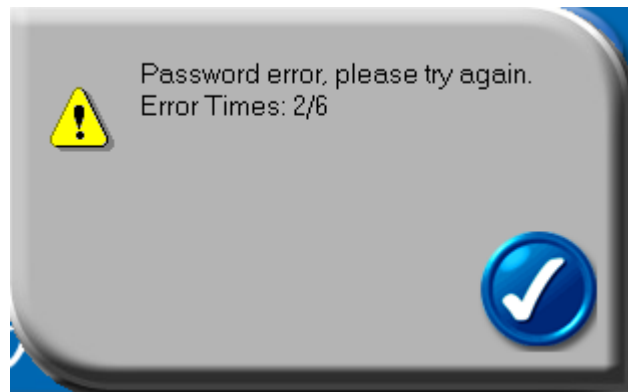
E3. Disable Password



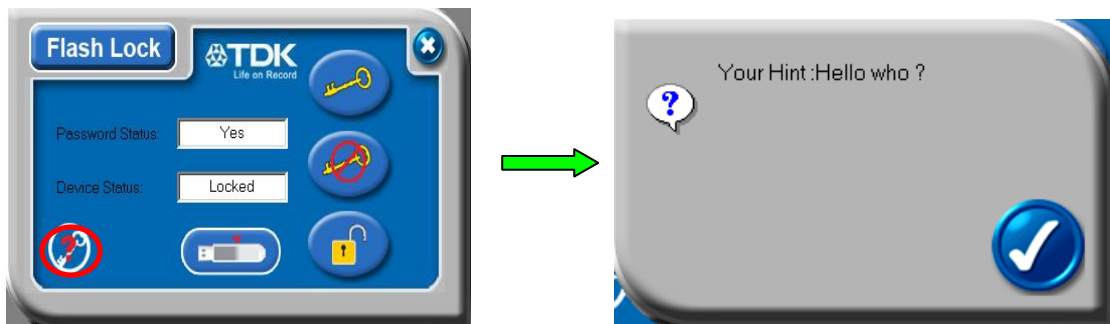
Press the middle button on the right to “Disable” (remove) the password.
You will be prompted to enter your password. Press  (cancel) if you do not want to remove your current password and password hint.



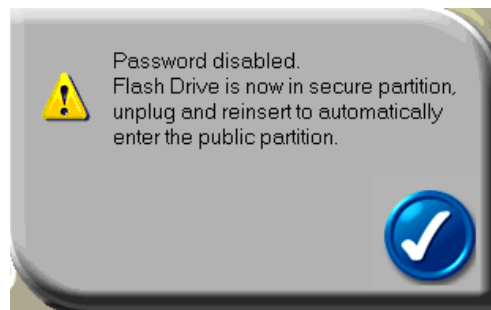
You have six chances to enter the password correctly, before the secure partition of your device gets re-formatted.



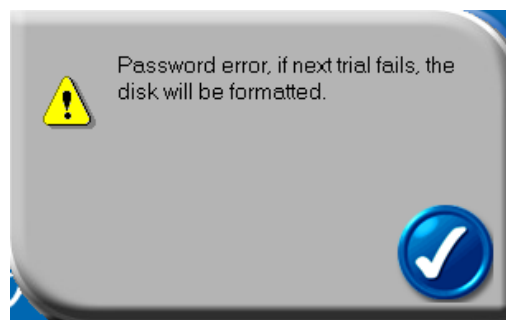
If you have forgotten your password, click on the password hint to remind yourself of your password.



Enter the correct password and your password will be disabled (removed).

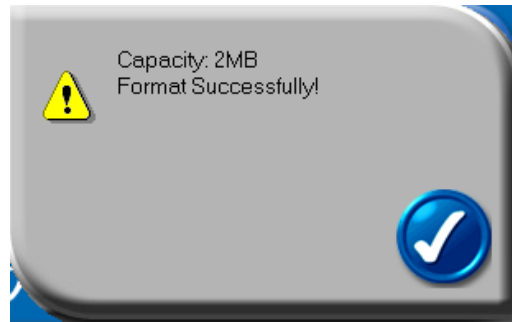


You will be reminded with the following message if you have typed in the wrong password for the fifth time.



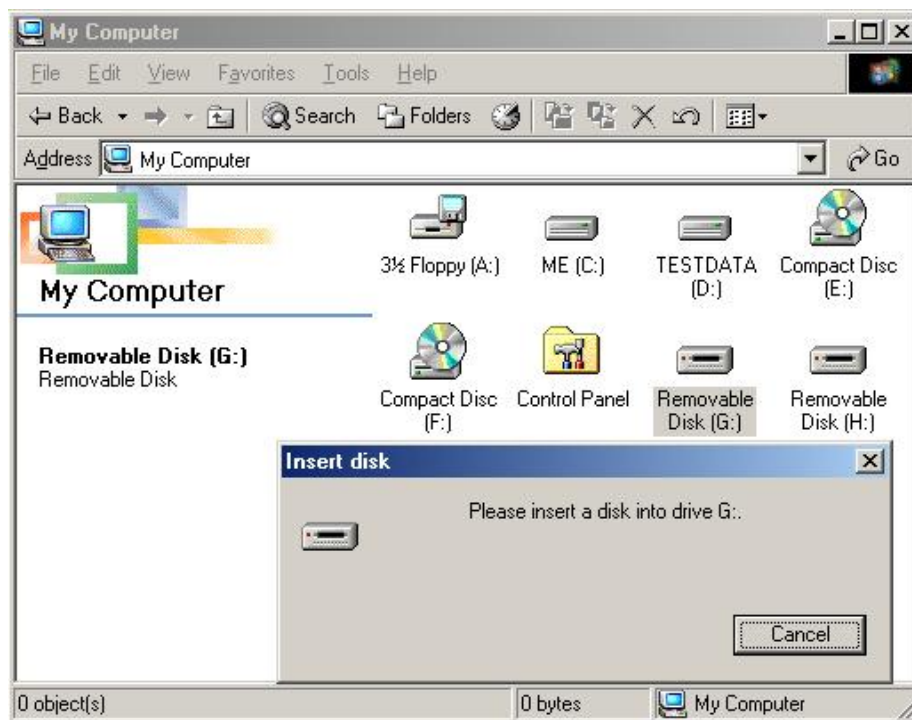
If you typed in the wrong password for the sixth time, your device will be

re-formatted automatically and all data in the secure partition will be erased from the device. The capacity of the secure partition will appear on the screen after successfully re-formatting.




E4. Unlock Device

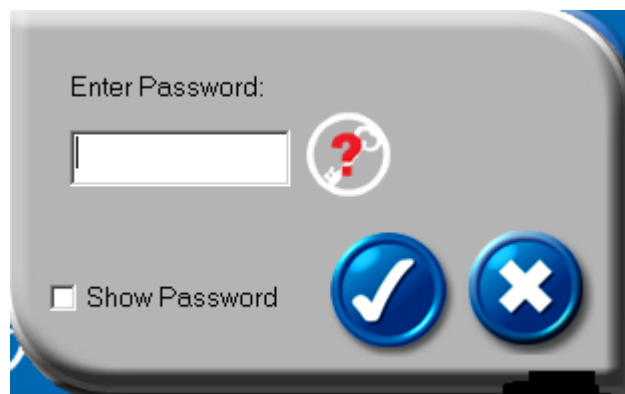
If you have setup a password, when you removed your device from the USB port (or if there is a suspension in power), partition 1 of your device gets locked automatically. You will not be able to access this partition 1, nor read or write data to this partition 1, until the login process is again completed.



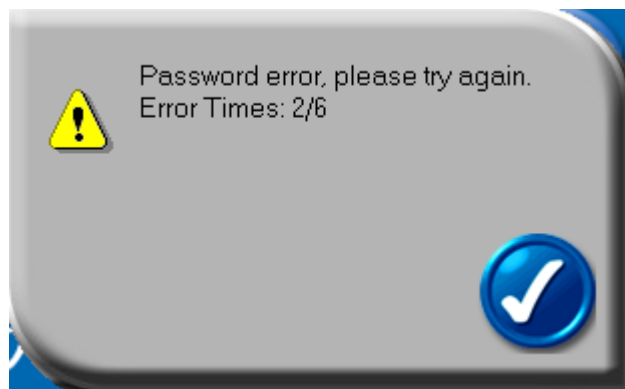
Press the third button on the right to “Unlock” the partition temporarily.



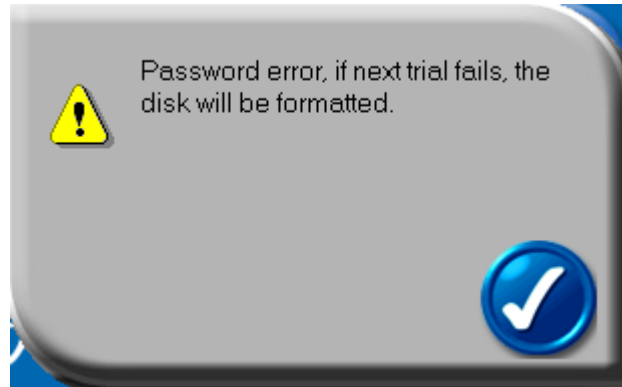
You will be prompted to enter your password. Press  (cancel) to cancel, if you do not want unlock partition 1.



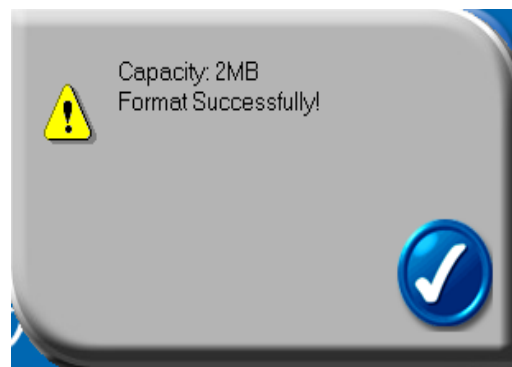
You have six chances to enter the password correctly, before your device gets formatted.



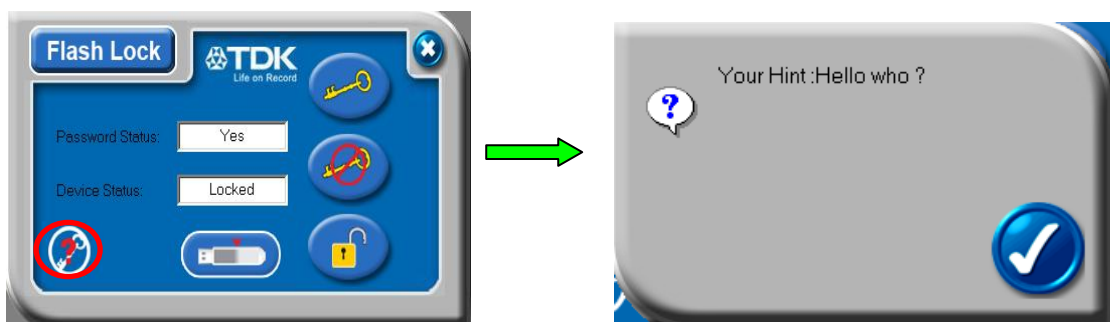
You will be reminded with the following message if you have typed in the wrong password for the fifth time.



If you typed in the wrong password for the sixth time, your device gets formatted automatically.

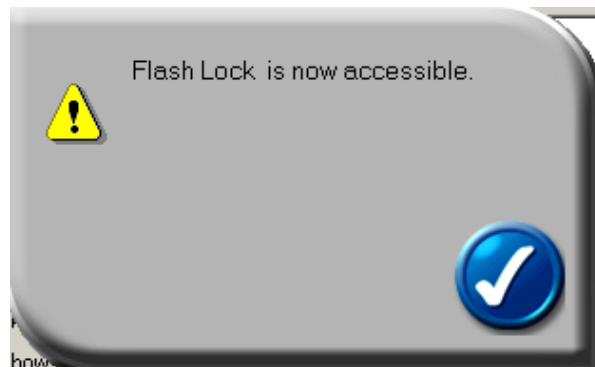


If you have forgotten your password, click on the password hint to remind yourself of the password.



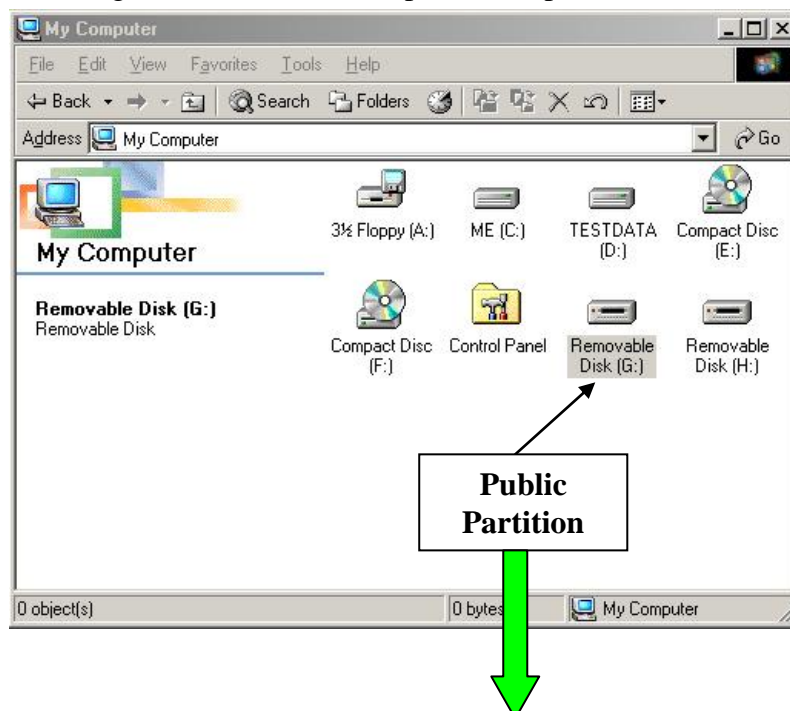
Once you have entered the correct password, partition 1 will be available

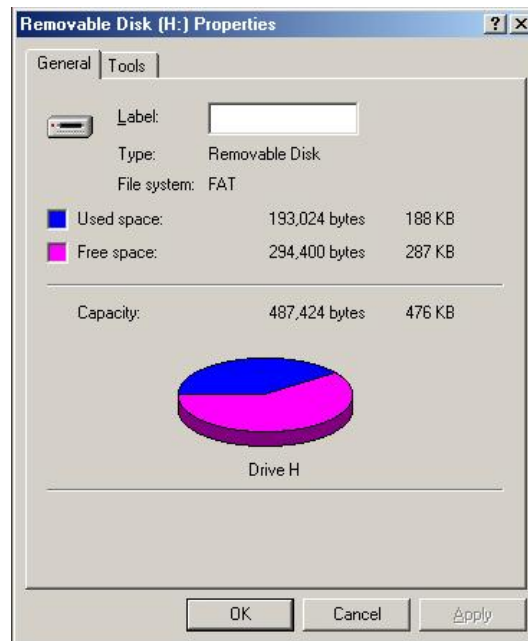
temporarily until you remove your device from the USB port or if there is a suspension in power. When partition 1 is unlocked, you can read or write data to the partition.



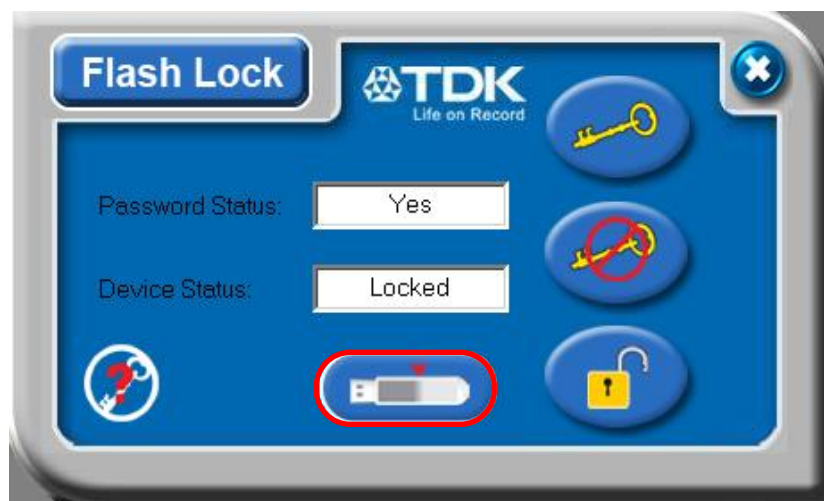
E5. Configure Partition Sizes

You can change the sizes of the two partitions (public and secure).

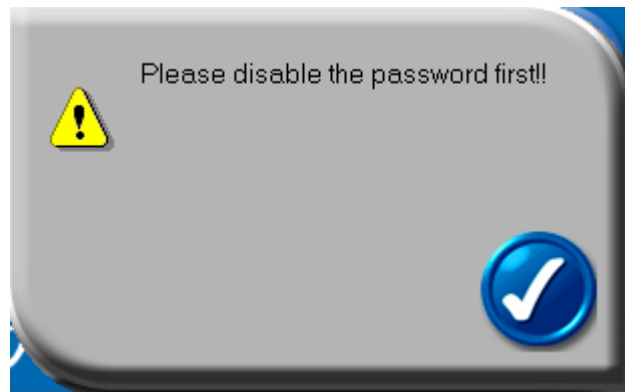






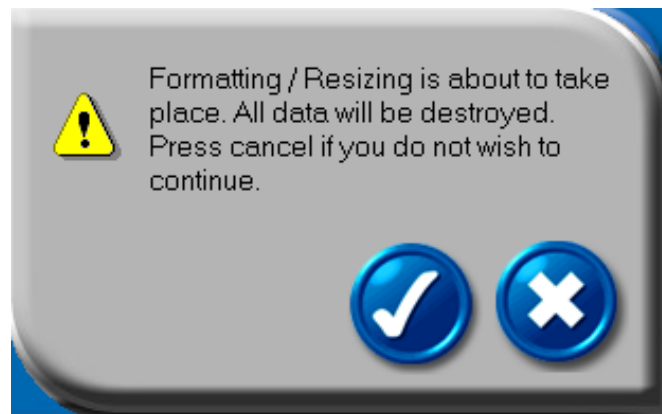
Press the middle button on the bottom of the Flash Lock application program to resize public and secure partition areas.



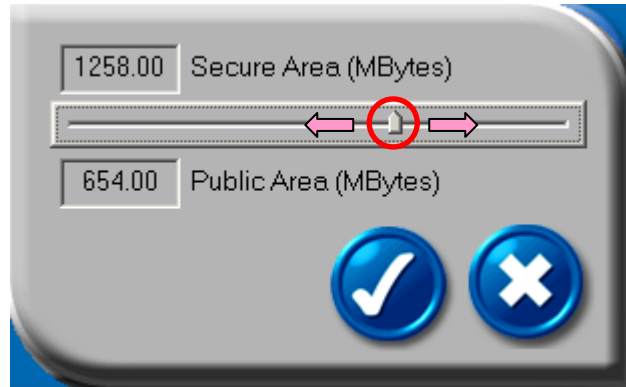
You need to “Disable” your password first, before you can use this “Configure Size” (resizing) function, if you have already setup a password. Follow section E3 of this manual to disable your password.





A warning message will show, telling you that data will be destroyed. If you have not yet backed up your data, press  (cancel) to cancel the operation and back up your data first; otherwise, press  (apply) to continue.

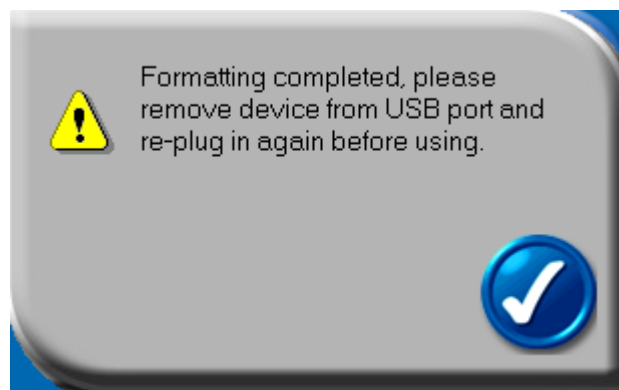
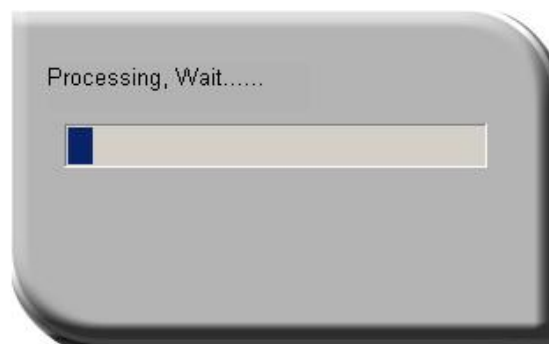


Move the pointer to the left or right to change the size of the public and secure area.
(minimum capacity can be set for public area is 2MB)



Press  (cancel) to cancel the operation if you do not want to change the current public and secure area; otherwise, press  (apply) to continue.

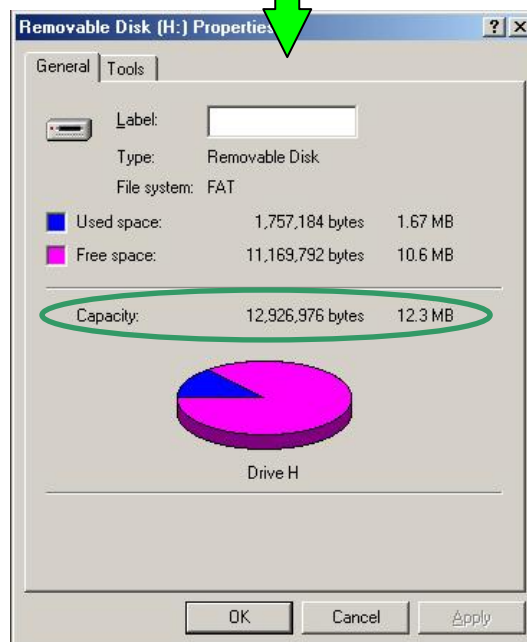
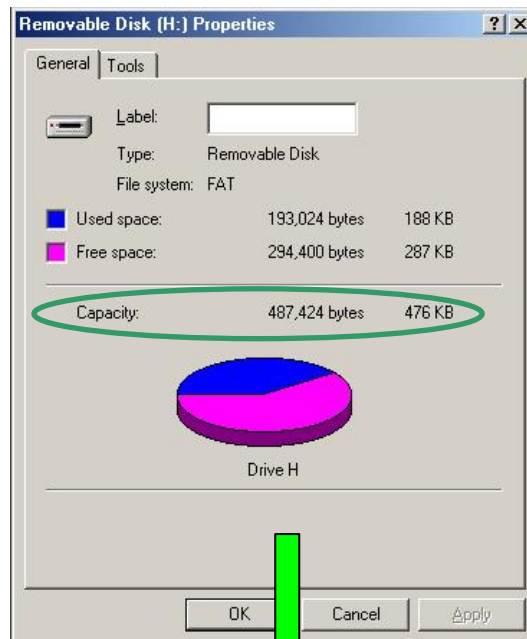
Formatting will then take place, please wait till the “Formatting Completed” message appears.



After configuring (resizing & formatting) your USB device, please remember to remove the device from USB port and re-plug it again, before using.

You can see the change in capacity sizes of each partition.

Before Configure Size



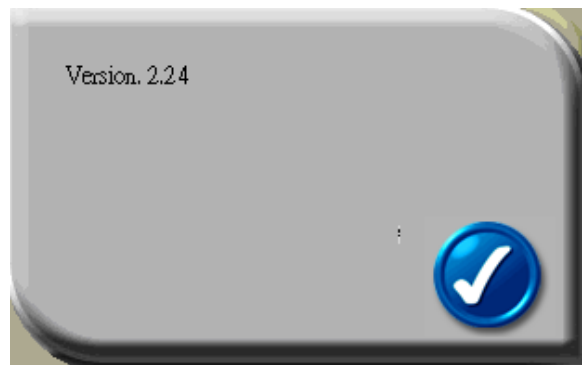
After Configure Size

Note : After configuring (resizing) is completed, all data will be erased, but the security application program will be restored in the public area automatically.

F. Checking the Security Application Program – Flash Lock’s Version

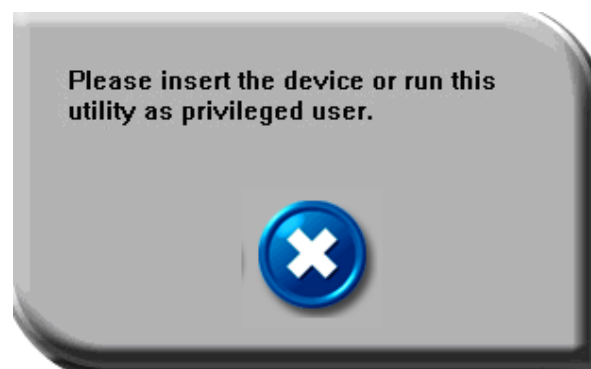
Flash Lock’s revision number is helpful if you’re considering upgrading to a newer version of the software, or if you are having trouble when using this software and are seeking help from our technical staff. Our technical staff may ask you which version you are using...etc.

Simply press the top left hand button and the version will be displayed.



G. Running the Program As Privilege User ?!

Some users may see this following screen.



Check and make sure that you have plugged in your device and your Windows operating system did recognize your device. Otherwise, please check FAQ Q3 for more detail.

H. FAQ – Frequently Asked Questions

Q1 My Windows 98 cannot detect my device, what can I do ?

- A1** Make sure you have installed the latest device driver for your device. If you have already done so, but Windows still cannot detect your device, please try the following.
- (1) Go to "Safe Mode" => "Device Manager"
 - (2) Remove any devices that's related to USB
 - (3) Remove any "Unknown devices"
 - (4) Remove any devices which are not present
 - (5) Remove any devices related to your device
 - (6) Restart machine
 - (7) Install driver if necessary (download latest driver from website)
 - (8) Restart machine as requested and then plug in your device

Q2 My Windows system is not detecting my device, what can I do ?

- A2** Since there is no driver required for these operating systems, the device uses the built-in driver (USB Mass Storage Class Driver) from these operating systems. If your operating system cannot find the device, then it is very likely that the built-in driver files were missing or corrupted; please try to recover these files from other computer or from the original Windows operating system CD.
- NB : Windows 2000 users, please upgrade to service pack 3 or later.*

Q3 When I run the Flash Lock program, it displayed “Please insert the device or run this utility as privileged user” ?

- A3** This problem may occur in Windows 2000 or Windows XP, under the following two situations.
- Situation 1 :** You have forgotten to insert your device.
- Situation 2 :** The security application program – Flash Lock requires some security privileges in these Windows operating systems. If you are not the administrator of the computer, these privileges may be restricted by administrator. Please check with your MIS or administrator of the computer to open up the privileges for you.

Q4 When attempting to format a large capacity device, greater than 32GB, using the native Windows 2000 or Windows XP format command, the operation fails. What should I do?

- A4** Large capacity flash drives are not supported for native format in Windows 2000 or Windows XP. Use the provided LOCK software to re-partition and format. Windows Vista, Windows 7 and Windows 8 will format the device using the NTFS format. The LOCK software will format to FAT32 on any windows system.

I. Regulatory

United States

This device complies with Part 15 of the FCC rules. Operation is subject to the following two conditions: (1) This device may not cause harmful interference, and (2) This device must accept any interference received, including interference that can cause undesired operation.

FCC Digital Emissions Compliance

This equipment has been tested and found to comply with the limits for a Class B digital device, pursuant to Part 15 of the FCC Rules. These limits are designed to provide reasonable protection against harmful interference in a residential installation. This equipment generates uses and can radiate radio frequency energy and, if not installed and used in accordance with the instructions, may cause harmful interference to radio communications. However, there is no guarantee that interference will not occur in a particular installation. If this equipment does cause harmful interference to radio or television reception, which can be determined by turning the equipment off and on, the user is encouraged to try to correct the interference by one or more of the following measures:

- Reorient or relocate the radio or television receiving antenna.
- Increase the separation between the computer equipment and receiver.
- Connect the equipment into an outlet on a circuit different from that to which the radio or television receiver is connected.
- Consult the dealer or an experienced radio television technician for help.

Canadian Digital Apparatus Compliance

This Class B digital apparatus complies with Canadian ICES-003.

Cet appareil numérique de la classe B est conforme à la norme NMB-003 du Canada.

Note: Changes or modifications not expressly approved by the party responsible for compliance could void the user's authority to operate the equipment.

Imation Enterprises Corp.

1 Imation Way, Oakdale, MN, 55128-3414, USA www.imation.com

The TDK Life on Record logo is a trademark of TDK Corporation and is used under license.

All other trademarks and logos are property of their respective owners.