

## TREK Mini Battery Replacement Instructions

Caution: Disconnect the Micro USB charging cable and place the power switch in the OFF position before beginning the replacement.

1. Tools recommended are a T-6 TORX driver, a small jeweler's screwdriver and long, needle-nosed pliers.



2. It will be necessary to remove the 4 screws on the bottom side of the unit base using the T-6 TORX driver. Since these screws are under the rubber pads on the bottom, it is suggested to peel up one end of each pad to access the screws as shown below:



The small screwdriver can be used to loosen the end of the pad and expose the screw head, then use the TORX driver to remove:



Repeat for the other three screws.

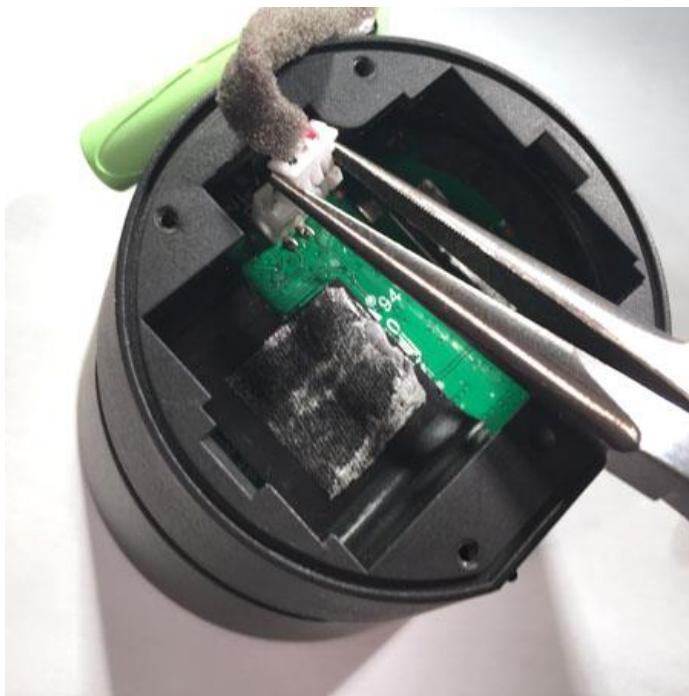
3. Lift the base cover away from the A08 body exposing the battery compartment.



- Using the screwdriver, lift the end of the battery. The foam pad adhesive may need to be separated from the battery using the screwdriver.



- Unplug the battery using long needle-nosed pliers to separate from the connector at the bottom of the cavity.



6. Replace with a battery pack from TDK Life on Record. Position the plug and battery wires to align with the socket connector. A screwdriver or the pliers can then be used to carefully press the plug of the new battery into the socket. Make sure that it is fully inserted and clicks into place.
7. Route the wires into place and press the new battery into the battery cavity.
8. Place the base cover in position and reinstall the 4 screws. Press down the four base pads.

This completes the battery replacement procedure.

Proper disposal of the old battery is essential from an environmental and safety point of view. Please follow local regulations for proper disposal. Putting any battery directly in the trash will harm the environment.

Do not incinerate.

Following the replacement, the new battery should be fully charged prior to usage. Connect the Micro USB charging cable to the Charge connector of the TREK Mini (under the flap) and the other end to a USB power source. Set the Power switch to ON and allow to charge until the red charging LED on the front side of the unit below the Power button goes OFF.

After charging, check that the battery switch on the right side of the TREK Mini is in the ON position for battery operation.